

DC INVERTER HIGH EFFICIENCY STANDARD AMBIENT VRF SYSTEMS

An efficient solution for more comfortable environments



High Efficiency Standard Ambient Heat Pump 380-400V 2Pipe 50/60Hz



BY JOHNSON CONTROLS

A broad line of user-friendly, earth-friendly units.



Cooling Capacity 25.4 - 211.2 kW
Heating Capacity 28.1 - 211.7 kW

- Broad compressor capacity operation range (10% - 100%)
- DC Inverter Scroll Technology
- Cooling from -5° C to $+43^{\circ}$ C DB (outdoor temperature)
- Heating from -15° C to $+15.5^{\circ}$ C WB (outdoor temperature)
- High performance - EER up to 4.29
- Green refrigerant R-410A
- Flexible and quick installation
- Smaller footprint
- Versatile indoor units
- Connection of up to 64 indoor units per refrigeration circuit consisting of 3 outdoor units
- Quiet operation

The YORK® line of VRF Air Conditioning System includes a wide range of sizes to meet most any customer's needs. Each model is designed to provide comfort and efficiency, in an easy-to-operate unit and flexible installation makes them an easy fit for a variety of applications. Models meet the highest energy efficiency ratings, so less energy is consumed without sacrificing comfort and performance. Each unit is engineered for quiet operation. And, wired or wireless remote controllers make changing comfort control settings easy with the touch of a button.

We create environments that help achieve a higher level of comfort.

No one knows building environments better than Johnson Controls. For more than 125 years, we've been in the business of building efficiency, delivering healthier environments, operational savings and sustainable solutions for our partners all over the world. In fact, we serve over one million customers and help the world reduce its energy consumption, saving customers over \$7.5 billion in energy costs.

FEATURES AND BENEFITS



High Energy Efficiency
Cutting-edge DC inverter scroll compressor technology, 64 speeds condensing BLDC blower motor, enhanced heat transfer technology and operation optimization ensures high efficiency.



R-410A
Environmentally-friendly refrigerant cools and heats more efficiently without destroying the ozone layer.



Low Ambient Cooling at -5° C
The AC will run in cooling mode when outdoor temperature is as low as -5° C to meet special user-requested applications.



Modular Design
Modular design provides flexibility to combine multiple outdoor units, providing simplified service, maintenance and cost savings.



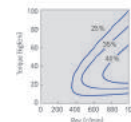
Low Ambient Heating at -15° C
The AC will run in heating mode when outdoor temperature is as low as -15° C to meet user-requested applications.



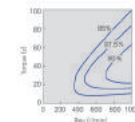
Multi-Speed Fan
Multi-speed fan helps satisfy various airflow requirement.



High Efficiency DC Inverter Scroll Compressor
DC inverter flexible scroll compressor is equipped with a frame compliance mechanism that allows movement in the axial direction of the frame supporting the cradle scroll. This greatly reduces leakage and friction loss, ensuring high efficiency across the speed range.



AC Motor Efficiency

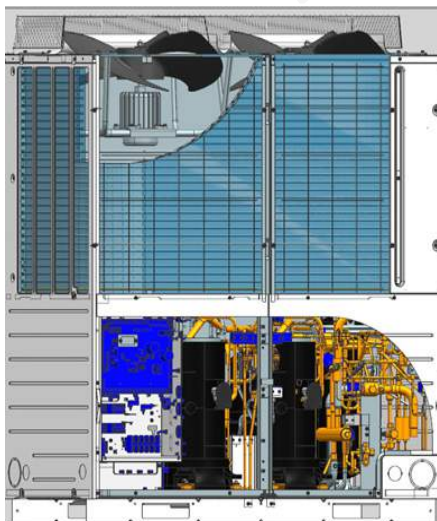


DC Motor Efficiency



DC Fan Motor, 64-stage Speed Adjustment

Outdoor unit DC inverter fan motor improves efficiency by 45% and largely reduces power input. The fan is capable of a 64-stage speed adjustment and , together with the DC inverter, keeps both the compressor discharge and suction pressure stable to ensure system reliability.



Patented Flow Channel Design

Streamlined fan design improves airflow by 17% and reduces noise by 3dB compared to previous product. The fan may reduce air loss and air resistance, and increase heat exchange efficiency.

ROBUST & RELIABLE DESIGN

Performance Tested

- Capability
- Safety
- 500 hours salt spray
- 6 hours rain
- 130% over match
- 1000m pipe length & 110m drop
- EMC

Reliability Tested

- Tests during fabrication include:
Parts, Leakage, Operation and Safety
- Tests before packing include:
Visual, Function, Capacity, Acoustic test and Accessories



Advanced technologies that ensure optimal & reliable operation

- Backup operation
If one outdoor unit malfunctions, other units continue to operate without stopping the whole system.
- Duty cycle operation to extend the system lifecycle
The outdoor units' duty cycle changes every 24 hours, balancing individual unit operation time and extending inverter compressor lifecycle by as much as three times.
- Balance operation
Outdoor units start in turn to balance operation time.



First time operation



Second time operation



Third time operation

FLEXIBLE SYSTEM SOLUTION

Product Family	Capacity kBtu/h	7.5	9.5	12.3	15.3	19.1	24.2	27.3	30.7	38.2	47.7	77.1	95.5
	Capacity kW	2.2	2.8	3.6	4.5	5.6	7.1	8.0	9.0	11.2	14.0	22.6	28.0
Slim Low Static Pressure Duct 185mm (0/20Pa)			X	X	X	X	X						
Low Static Pressure Duct (0/20Pa)		X	X	X	X	X	X						
Medium Static Pressure Duct (50/96Pa)						X	X	X					
Medium Static Pressure Duct (80/120Pa)									X	X	X		
High Static Pressure Duct (100/196Pa)						X	X	X	X	X	X		
												X	X
Two Way Cassette			X	X	X	X							
Four Way Compact Cassette (700x700)			X	X	X								
Four Way Cassette (950x950)						X	X	X	X	X	X		
High Wall		X	X	X	X	X	X						
Console		X	X	X		X							
Floor Ceiling			X	X	X	X	X	X	X	X	X		
Fresh Air Unit												X	
												X	X
Heat Recovery Ventilator (CMH/CFM)		150 /88	260 /153	800 /471	1000 /588								

Free mix of versatile indoor units
65 models to complement many different room designs.

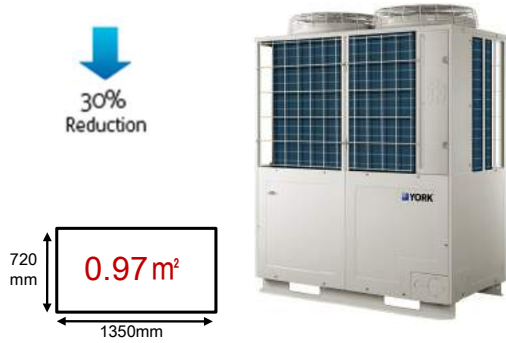


Free combination of modular outdoor units

A line up of outdoor units from 8HP to 72HP with 2HP increments which is based on 9 basic 8/10/12/14/16/18/20/22/24HP modular units, and up to 64 indoor units can be matched into a single combination system.

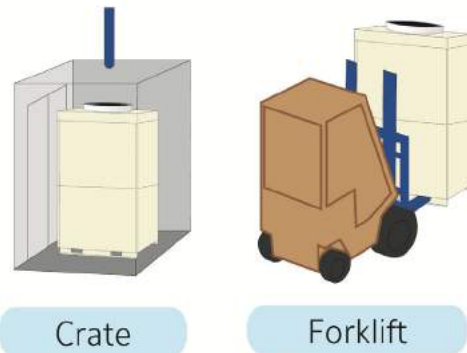
Capacity	HP	8	10	12	14	16	18	20	22	24	26	28	30	32	34	36	38	40	
	TR	7.2	8.2	9.9	11.8	13.3	14.6	16.4	18.1	20	21.7	23.6	24.9	26.5	27.8	29.6	31.1	32.8	
	Cooling kW	25.4	28.9	34.8	41.5	46.4	51.5	57.8	63.7	70.4	76.3	83	87.9	93	97.9	104.2	109.3	115.6	
	Heating kW	28.1	32.4	37.9	45.8	51.1	57.2	63.7	70.1	73.9	83.7	91.6	96.9	103.0	108.3	114.8	120.9	127.4	
Maximum Indoor Units		13	16	20	24	27	30	33	36	40	43	46	50	53	57	60	64	64	
Appearance																			
Capacity	HP	42	44	46	48	50	52	54	56	58	60	62	64	66	68	70	72		
	TR	34.5	36.4	39.8	40	41.1	42.8	44.28	46	47.5	49.3	50.9	52.8	54.5	56.4	58.1	60		
	Cooling kW	121.5	128.2	140	140.8	144.5	150.6	155.7	162	167.1	173.4	179.3	186	191.9	198.6	204.5	211.2		
	Heating kW	133.8	137.6	153.8	147.8	160.2	165.9	172	178.5	184.6	191.1	197.5	201.3	207.7	211.5	217.9	221.7		
Maximum Indoor Units		64	64	64	64	64	64	64	64	64	64	64	64	64	64	64	64		
Appearance																			

FLEXIBLE SYSTEM & EASY INSTALLATION



Easy Transportation

The outdoor unit occupies a space of 0.97m². It can be placed on elevators, saving installation cost and time. It also eliminates the need for an external crane.



Easy Placement

- Total 1000m liquid refrigerant piping length
 - Max 190m refrigerant piping length for single pipe
 - Recommended 50m height drop when outdoor unit is above indoor unit
 - Recommended 40m height drop when outdoor unit is below indoor unit
 - Max 110m height drop when outdoor unit is above indoor unit
 - Max 90m height drop when outdoor unit is below indoor unit
 - Max 30m height drop between indoor units under same outdoor unit
- *If you wish to install VRF system in the place with level difference exceeding recommended values, please contact local sales office for piping design recommended values.

Flexible Combinations

- Up to 64 indoor units can be connected to a single refrigerant cycle
- Total indoor unit capacity can be 50-130% of outdoor units



FLEXIBLE CONTROL MEETS ANY TYPE OF APPLICATION

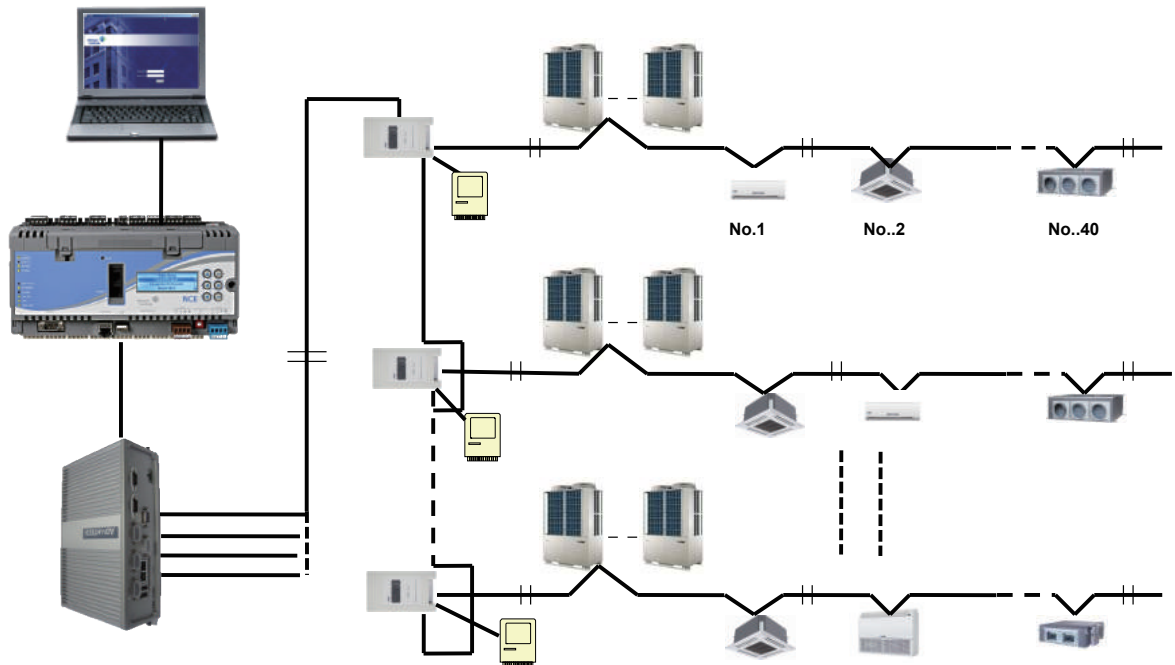
A wide variety of control options

- Wide controller
- Wireless controller
- Touch screen central controller
- Central controller with monitor software



Metasys® system - connectivity through BacNet/IP & LonWorks

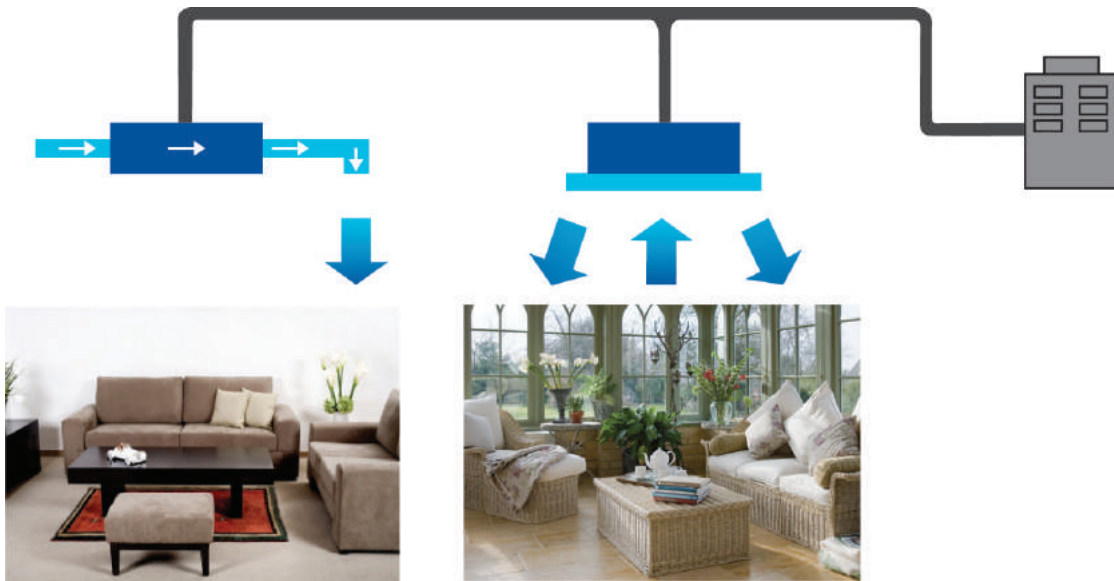
- Seamless integration to Building Management System
- Remote monitoring
- Energy management



DESIGN TO A BETTER WORLD

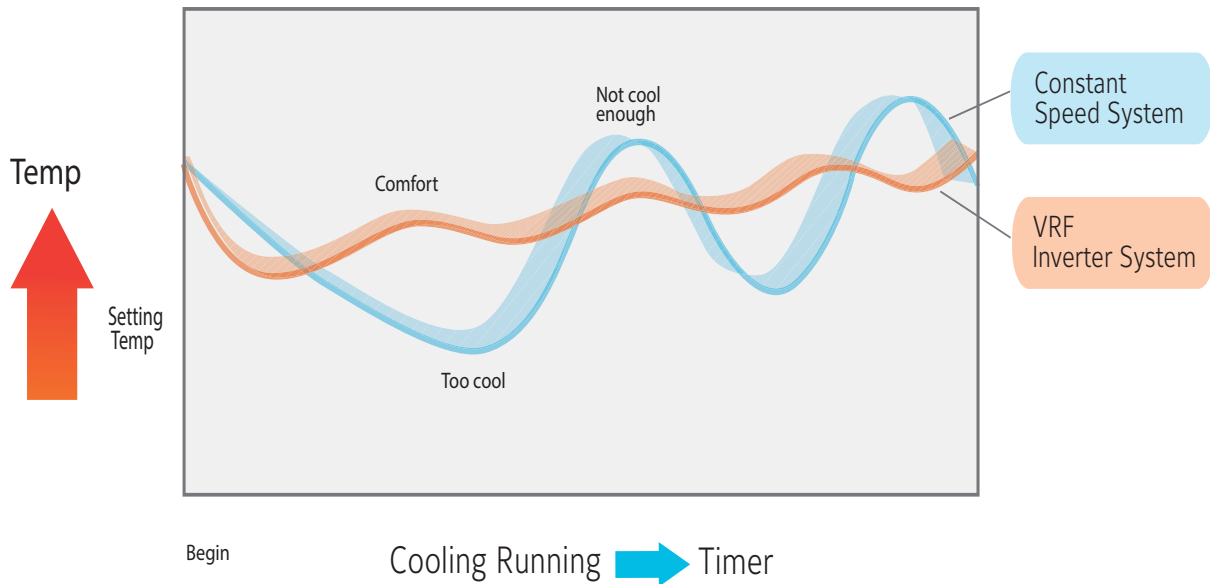
Independent fresh air system

A fresh air unit can be installed with other indoor units to introduce outdoor air for improved air quality.



Precise temperature control

Use of the inverter control helps maintain precise temperature within the range of +/- 0.5°C.



SPECIFICATION - MODULAR VRF OUTDOOR UNIT 380V

Features

- High performance - EER up to 4.29
- Frequency 50/60Hz
- Top discharge
- Smaller footprint
- Match with versatile indoor units
- Flexible and quick installation
- Quiet operation
- 9 Basic Modular units: 8HP, 10HP, 12HP, 14HP, 16HP,18HP,20HP,22HP,24HP
- Connection of up to 64 indoor units per refrigeration circuit consisting of 3 outdoor units



Model NAME		YV2VYH025KASFD-1	YV2VYH028KASFD-1	YV2VYH033KASFD-1	YV2VYH040KASFD-1	YV2VYH045KASFD-1	
Power Supply		3Ph/380~400V/50-60Hz					
Ph-V-Hz							
Cooling	Capacity	kW	25.4	28.9	34.8	41.5	46.4
	Capacity	kBtu/h	86.7	98.5	118.7	141.5	158.2
	Input	kW	6.2	6.9	8.5	11.1	12.9
	Current	A	9.9	11.1	13.5	17.7	20.6
	EER	W/W	4.29	4.00	3.90	3.55	3.47
Heating	Capacity	kW	28.1	32.4	37.9	45.8	51.1
	Capacity	kBtu/h	95.8	110.5	129.2	156.2	174.3
	Input	kW	6.4	7.4	8.91	11.9	13.0
	Current	A	10.3	11.9	15	19.0	20.7
	COP	W/W	4.37	4.37	4.25	3.86	3.94
Max. Input Consumption		kW	14.02	14.38	14.73	16.91	22.68
Max. Current		A	23.1	23.7	25.1	28.4	36.8
Outdoor Air Flow		m	15000	15000	15000	15000	15600
Outdoor Sound Pressure Level		dB(A)	57	57	59	60	61
Piping Liquid Side/ Gas Side		mm	ø12.7/ø25.4	ø12.7/ø25.4	ø12.7/ø25.4	ø12.7/ø28.58	ø12.7/ø28.58
Dimensions	Unit (W*D*H)	mm	1350*720*1690	1350*720*1690	1350*720*1690	1350*720*1690	1350*720*1690
Net/Gross weight		kg	278/303	278/303	278/303	282/307	324/349
Qty per 20' /40' /40' HQ		Pieces	7/14/14	7/14/14	7/14/14	7/14/14	7/14/14

Rating Conditions(AHRI1230):

	Outdoor Temperature	Indoor Temperature
Cooling:	35°DB/23.9°WB	26.7°DB/19.4°WB
Heating:	8.3°DB/6.1°WB	21.1°DB /15.6°WB

SPECIFICATION - MODULAR VRF OUTDOOR UNIT 380V

Features

- High performance - EER up to 4.29
- Frequency 50/60Hz
- Top discharge
- Smaller footprint
- Match with versatile indoor units
- Flexible and quick installation
- Quiet operation
- 9 Basic Modular units: 8HP, 10HP, 12HP, 14HP, 16HP,18HP,20HP,22HP,24HP
- Connection of up to 64 indoor units per refrigeration circuit consisting of 3 outdoor units



Model NAME		YV2VYH050KASFD-1	YV2VYH056KASFD-1	YV2VYH061KASFD-1	YV2VYH068KASFD-1	
Power Supply		3Ph/380-400V/50-60Hz				
Ph-V-Hz						
Cooling	Capacity	kW	51.5	57.8	63.7	70.4
	Capacity	kBtu/h	175.6	197.1	217.2	240.1
	Input	kW	14.9	16.6	19.1	21.7
	Current	A	23.9	26.6	30.5	34.7
	EER	W/W	3.42	3.34	3.18	3.09
Heating	Capacity	kW	57.2	63.7	70.1	73.9
	Capacity	kBtu/h	195.1	217.2	239.0	252.0
	Input	kW	15.2	16.6	18.8	19.1
	Current	A	24.2	26.5	30.1	30.6
	COP	W/W	3.77	3.85	3.73	3.87
Max. Input Consumption		kW	22.1	25.19	30.56	37.47
Max. Current		A	36.2	41.1	49.7	60.5
Outdoor Air Flow		m	16200	16200	16200	16200
Outdoor Sound Pressure Level		dB(A)	62	62	62	63
Piping Liquid Side/ Gas Side		mm	ø12.7/ø28.58	ø12.7/ø28.58	ø12.7/ø28.58	ø12.7/ø28.58
Dimensions	Unit (W*D*H)	mm	1350*720*2048	1350*720*2048	1350*720*2048	1350*720*2048
Net/Gross weight		kg	343/368	343/368	369/394	369/394
Qty per 20' /40' /40' HQ		Pieces	7/14/14	7/14/14	7/14/14	7/14/14

Rating Conditions(AHRI1230):

	Outdoor Temperature	Indoor Temperature
Cooling:	35°DB/23.9°WB	26.7°DB/19.4°WB
Heating:	8.3°DB/6.1°WB	21.1°DB /15.6°WB

CONSOLE

Features

- Compact design & small space occupation
- Built-in EEV
- Quiet operation
- Easy installation and maintenance
- Air filter easily removed and cleaned
- Air discharge through Top(Cooling) or Bottom(Heating)
- Without built-in high head drain pump, not available for external drain pump
- Wireless controller as standard offer, wired controller not optional



Specification

Model Name			YV5VXH022WAR--GX	YV5VXH028WAR--GX	YV5VXH036WAR--GX	YV5VXH056WAR--GX
Power Supply		Ph-V-Hz	1Ph/220~230V/50-60Hz	1Ph/220~230V/50-60Hz	1Ph/220~230V/50-60Hz	1Ph/220~230V/50-60Hz
Nominal Capacity						
Cooling	Capacity	kW	2.2	2.8	3.6	5
	Input	W	100	100	100	100
	Current	A	0.44	0.44	0.44	0.44
Heating	Capacity	kW	2.5	3.2	4	6
	Input	W	100	100	100	100
	Current	A	0.44	0.44	0.44	0.44
Motor						
Input	W		55+33	55+33	55+33	55+33
Capacitor	μ F		1.2 μ F/450V	1.2 μ F/450V	1.2 μ F/450V	1.2 μ F/450V
Speed (H/M/L)	rpm		900/850/800 (Up) 850/800/750 (Down)	900/850/800 (Up) 850/800/750 (Down)	1000/925/850(Up) 950/875/800 (Down)	1250/1000/950 (Up) 1200/950/900 (Down)
Performance						
Indoor Noise Level (H/M/L)	dB(A)		43/39/36	43/39/36	43/39/36	48/46/42
External Static Pressure	Pa		/	/	/	/
Indoor Air Flow(H)	m3/h / CFM		460/270	460/270	520/306	580/341
Piping Size	Liquid/Gas	mm	ø6.35/ø12.7	ø6.35/ø12.7	ø6.35/ø12.7	ø6.35/ø12.7
Containerization						
Indoor unit	Dimension (WxHxD)	mm	720x640x255	720x640x255	720x640x255	720x640x255
	Packing (WxHxD)	mm	784x719x305	784x719x305	784x719x305	784x719x305
	Net/Gross weight	kg	18/20	18/20	18/20	18/20
Qty per 20' /40' /40' HQ	Pieces		168/360/360	168/360/360	168/360/360	168/360/360

Rating Conditions(AHRI1230):

	Outdoor Temperature	Indoor Temperature
Cooling:	35°DB/23.9°WB	26.7°DB/19.4°WB
Heating:	8.3°DB/6.1°WB	21.1°DB /15.6°WB

TWO-WAY CASSETTE

Features

- Stylish design
 - Seamless integration with any interior decoration
- 280mm height main body
- Quiet operation
- Easy installation
- Built-in water pump with max. 750mm head
- Easy cleaning and maintenance
 - Flat type suction grille for easy cleaning
- Wired controller as standard offer, wireless controller optional



Specification

Model Name			YV8VXH028WAR--GX	YV8VXH036WAR--GX	YV8VXH045WAR--GX	YV8VXH056WAR--GX
Power Supply		Ph-V-Hz	1Ph/220~230V/50-60Hz	1Ph/220~230V/50-60Hz	1Ph/220~230V/50-60Hz	1Ph/220~230V/50-60Hz
Nominal Capacity						
Cooling	Capacity	kW	2.8	3.6	4.5	5.6
	Input	W	90	90	110	110
	Current	A	0.5	0.5	0.62	0.62
Heating	Capacity	kW	3.2	4	5	6.3
	Input	W	90	90	110	110
	Current	A	0.5	0.5	0.62	0.62
Motor						
Input		W	70	70	70	70
Capacitor		μ F	3 μ F/450V	3 μ F/450V	3 μ F/450V	3 μ F/450V
Speed (H/M/L)		rpm	670/530/440	670/530/440	670/530/440	670/530/440
Performance						
Indoor Noise Level (H/M/L)		dB(A)	42/37/33	42/37/33	44/39/34	44/39/34
External Static Pressure		Pa	/	/	/	/
Indoor Air Flow(H)		m3/h / CFM	840/494	840/494	840/494	840/494
Piping Size	Liquid/Gas	mm	ø6.35/ø9.52	ø6.35/ø12.7	ø6.35/ø12.7	ø6.35/ø12.7
Containerization						
Indoor unit	Dimension (WxHxD)	mm	817x220x620(Cabinet) 1055x8x680(Panel)	817x220x620(Cabinet) 1055x8x680(Panel)	817x220x620(Cabinet) 1055x8x680(Panel)	817x220x620(Cabinet) 1055x8x680(Panel)
	Packing (WxHxD)	mm	1015x278x695(Cabinet) 1110x161x720(Panel)	1015x278x695(Cabinet) 1110x161x720(Panel)	1015x278x695(Cabinet) 1110x161x720(Panel)	1015x278x695(Cabinet) 1110x161x720(Panel)
	Net/Gross weight	kg	21+7/23+8	21+7/23+8	21+7/23+8	21+7/23+8
Qty per 20' /40' /40' HQ		Pieces	84/168/192	84/168/192	84/168/192	84/168/192

Rating Conditions(AHRI1230):

	Outdoor Temperature	Indoor Temperature
Cooling:	35°DB/23.9°WB	26.7°DB/19.4°WB
Heating:	8.3°DB/6.1°WB	21.1°DB /15.6°WB

FOUR-WAY CASSETTE

Features

- Quiet operation
 - New irregular helix design fan blade enabling the indoor unit running at lowest sound level
- Standard built-in high head drain pump
 - Up to 750mm drain-head creating the ideal solution for perfect water drainage
- Fresh air inlet except for 5.8/7.1/8.0kW
 - Pre-set fresh air inlet can introduce the outside fresh air into the room, greatly improve the indoor air quality, away from “air conditioner symptom” .
- Branch outlet except for 2.8/3.6/4.5kW
 - 1 or 2 branch outlets for flexible and better air distribution
- Advanced structure facilitating installation and maintenance
 - 90° rotation suction grille
 - Randomly installation direction
- Real compact design for 2.8/3.6/4.5kW
 - The panel dimension is 700x700mm, and the unit dimension is 570x570mm, smaller footprint, easier for installation.
- Wired controller as standard offer, wireless controller optional



Specification

Model Name			YVKVXH028WAR--GX	YVKVXH036WAR--GX	YVKVXH045WAR--GX	YVKVXH056WAR--GX
Power Supply		Ph-V-Hz	1Ph/220~230V/50-60Hz	1Ph/220~230V/50-60Hz	1Ph/220~230V/50-60Hz	1Ph/220~230V/50-60Hz
Nominal Capacity						
Cooling	Capacity	kW	2.8	3.6	4.5	5.6
	Input	W	80	80	80	145
	Current	A	0.47	0.47	0.47	0.67
Heating	Capacity	kW	3.2	4	5	6.3
	Input	W	80	80	80	145
	Current	A	0.47	0.47	0.47	0.67
Motor						
Input		W	72	72	72	142
Capacitor		μ F	2 μ F/450V	2 μ F/450V	2 μ F/450V	3 μ F/450V
Speed (H/M/L)		rpm	760/650/520	760/650/520	760/650/520	710/620/520
Performance						
Indoor Noise Level (H/M/L)		dB(A)	32/30/29	32/30/29	33/30/29	34/32/30
External Static Pressure		Pa	/	/	/	/
Indoor Air Flow(H)		m3/h / CFM	700/412	650/382	650/382	1200/706
Piping Size Liquid/Gas		mm	ø6.35/ø9.52	ø6.35/ø12.7	ø6.35/ø12.7	ø6.35/ø12.7
Containerization						
Indoor unit	Dimension (WxHxD)	mm	570x260x570(Cabinet) 700x60x700(Panel)	570x260x570(Cabinet) 700x60x700(Panel)	570x260x570(Cabinet) 700x60x700(Panel)	840x240x840(Cabinet) 950x60x950(Panel)
	Packing (WxHxD)	mm	705x335x667(Cabinet) 740x115x740(Panel)	705x335x667(Cabinet) 740x115x740(Panel)	705x335x667(Cabinet) 740x115x740(Panel)	920x322x910(Cabinet) 992x115x992(Panel)
	Net/Gross weight	kg	17+2.8/21+4.5	19+2.8/23+4.5	19+2.8/23+4.5	30+6/32.5+7.5
Qty per 20' /40' /40' HQ		Pieces	120/240/280	120/240/280	120/240/280	84/168/192

FOUR-WAY CASSETTE



50/60 Hz

50Hz and 60Hz, 220-230V power supply supports regions with unstable voltage, avoids power supply demand, and saves inventory and transport costs.



Built-in Drain Pump

Built-in drain pump can pump condensation to a high level, which facilitates draining condensation from indoor unit and makes installation easier.



Quiet Operation

Technology and compact design reduce noise level to as low as 29 decibels for a super quiet and comfortable user experience.



4 Fan Settings

Smaller dimensions for easy installation and transportation, and reduces cost.



Washable Filter

Washable filter allows for convenient service and maintenance.

Model Name			YVKVXH071WAR--GX	YVKVXH080WAR--GX	YVKVXH090WAR--GX	YVKVXH112WAR--GX	YVKVXH140WAR--GX
Power Supply		Ph-V-Hz	1Ph/220~230V/50-60Hz	1Ph/220~230V/50-60Hz	1Ph/220~230V/50-60Hz	1Ph/220~230V/50-60Hz	1Ph/220~230V/50-60Hz
Nominal Capacity							
Cooling	Capacity	kW	7.1	8	9	11.2	14
	Input	W	145	145	150	150	150
	Current	A	0.67	0.67	0.76	0.76	0.76
Heating	Capacity	kW	8	9	10	12.5	16
	Input	W	145	145	150	150	150
	Current	A	0.67	0.67	0.76	0.76	0.76
Motor							
Input	W		142	142	148	148	148
Capacitor	μ F		3 μ F/450V	3 μ F/450V	8 μ F/450V	8 μ F/450V	8 μ F/450V
Speed (H/M/L)	rpm		710/620/520	710/620/520	675/610/530	675/610/530	675/610/530
Performance							
Indoor Noise Level (H/M/L)	dB(A)		35/34/31	37/35/31	37/35/31	37/35/31	44/40/36
External Static Pressure	Pa		/	/	/	/	/
Indoor Air Flow(H)	m3/h / CFM		1200/706	1200/706	1800/1058	1800/1058	1800/1058
Piping Size	Liquid/Gas	mm	ø9.52/ø15.88	ø9.52/ø15.88	ø9.52/ø15.88	ø9.52/ø15.88	ø9.52/ø15.88
Containerization							
Indoor unit	Dimension (WxHxD)	mm	840x240x840(Cabinet) 950x60x950(Panel)	840x240x840(Cabinet) 950x60x950(Panel)	840x295x840(Cabinet) 950x60x950(Panel)	840x295x840(Cabinet) 950x60x950(Panel)	840x295x840(Cabinet) 950x60x950(Panel)
	Packing (WxHxD)	mm	920x322x910(Cabinet) 992x115x992(Panel)	920x322x910(Cabinet) 992x115x992(Panel)	920x370x910(Cabinet) 992x115x992(Panel)	920x370x910(Cabinet) 992x115x992(Panel)	920x370x910(Cabinet) 992x115x992(Panel)
	Net/Gross weight	kg	30+6/32.5+7.5	30+6/32.5+7.5	38+6/40+7.5	38+6/40+7.5	38+6/40+7.5
Qty per 20' /40' /40' HQ	Pieces		84/168/192	84/168/192	60/126/147	60/126/147	60/126/147

Rating Conditions(AHR1230):

	Outdoor Temperature	Indoor Temperature
Cooling:	35°DB/23.9°WB	26.7°DB/19.4°WB
Heating:	8.3°DB/6.1°WB	21.1°DB /15.6°WB

HIGH WALL

Features

- LED display
- Built-in EEV
- Stylish design
- Super quiet operation
- 3D air flow
- Intelligent air direction control, cooling air goes up and heating air goes down
- Vitamin C and ESF Filter Optional
- Wireless controller as standard offer, wired controller not optional
- Without built-in high head drain pump, not available for external drain pump



Specification

Model Name			YVHVXH022WAR--FX	YVHVXH028WAR--FX	YVHVXH036WAR--FX
Power Supply		Ph-V-Hz	1Ph/220~230V/50-60Hz	1Ph/220~230V/50-60Hz	1Ph/220~230V/50-60Hz
Nominal Capacity					
Cooling	Capacity	kW	2.2	2.8	3.6
	Input	W	71	71	71
	Current	A	0.31	0.31	0.31
Heating	Capacity	kW	2.5	3.2	4
	Input	W	71	71	71
	Current	A	0.31	0.31	0.31
Motor					
Input	W		52	52	52
Capacitor	μ F		/	/	/
Speed (H/M/L)	rpm		1300/1200/1100	1300/1200/1100	1300/1200/1100
Performance					
Indoor Noise Level (H/M/L)	dB(A)		37/33/31	37/34/31	41/36/33
External Static Pressure	Pa		/	/	/
Indoor Air Flow(H)	m3/h / CFM		600/353	600/353	600/353
Piping Size	Liquid/Gas	mm	ø6.35/ø12.7	ø6.35/ø12.7	ø6.35/ø12.7
Containerization					
Indoor unit	Dimension (WxHxD)	mm	938x265x187	938x265x187	938x265x187
	Packing (WxHxD)	mm	1016x360x304	1016x360x304	1016x360x304
	Net/Gross weight	kg	10.9/13.1	10.9/13.1	10.9/13.1
Qty per 20' /40' /40' HQ	Pieces		220/560/630	220/560/630	220/560/630

Rating Conditions(AHRI1230):

	Outdoor Temperature	Indoor Temperature
Cooling:	35°DB/23.9°WB	26.7°DB/19.4°WB
Heating:	8.3°DB/6.1°WB	21.1°DB /15.6°WB

HIGH WALL



50/60 Hz
50Hz and 60Hz, 220-230V power supply supports regions with unstable voltage, avoids power supply demand, and saves inventory and transport costs.



LED Display
Embedded LED display screen provides for easy setting and monitoring of temperature, operation and timer modes, fan speed and error codes.



Quiet Operation
Technology and compact design reduce noise level to as low as 31 decibels for a super quiet and comfortable user experience.



Vitamin C Layer
Vitamin C Layer releases fresh vitamin C into the air to help reduce stress, soften the skin and increase immunity. (Optional)



ESF Filter
Electrostatic filter with an active carbon layer traps harmful dust and removes unpleasant odors, improving air quality and creating a fresh, comfortable environment. (Optional)

Specification

Model Name			YVHVXH045WAR--FX	YVHVXH056WAR--FX	YVHVXH071WAR--FX
Power Supply		Ph-V-Hz	1Ph/220~230V/50-60Hz	1Ph/220~230V/50-60Hz	1Ph/220~230V/50-60Hz
Nominal Capacity					
Cooling	Capacity	kW	4.5	5.6	7.1
	Input	W	71	94	94
	Current	A	0.31	0.41	0.41
Heating	Capacity	kW	5	6.3	8
	Input	W	71	94	94
	Current	A	0.31	0.41	0.41
Motor					
Input	W		52	53	53
Capacitor	μ F		/	/	/
Speed (H/M/L)	rpm		1300/1200/1100	1250/1200/1100	1250/1200/1100
Performance					
Indoor Noise Level (H/M/L)	dB(A)		41/36/33	43/39/34	48/39/37
External Static Pressure	Pa		/	/	/
Indoor Air Flow(H)	m3/h / CFM		600/353	800/470	800/470
Piping Size	Liquid/Gas	mm	ø6.35/ø12.7	ø9.52/ø15.88	ø9.52/ø15.88
Containerization					
Indoor unit	Dimension (WxHxD)	mm	938x265x187	1046x299x239	1046x299x239
	Packing (WxHxD)	mm	1016x360x304	1111x373x329	1111x373x329
	Net/Gross weight	kg	10.9/13.1	13/16.5	13/16.5
Qty per 20' /40' /40' HQ	Pieces		220/560/630	160/420/465	160/420/465

Rating Conditions(AHRI1230):

	Outdoor Temperature	Indoor Temperature
Cooling:	35°DB/23.9°WB	26.7°DB/19.4°WB
Heating:	8.3°DB/6.1°WB	21.1°DB /15.6°WB

FLOOR CEILING

Features

- Flexible and easy installation
 - Installed on the floor or in the ceiling
 - Installation space greatly decreased
 - Easy service and easy installation
- Ultra thin body, only 199mm for 2.8~7.1kW
- Large angle air supplying
 - 100° wide angle louvers and 70° wide angle blades design
 - Precise control of air flow
 - Equally distributed comfortable air flow to every corner of room
- Without built-in drain pump, optional external drain pump
- ESF Filter Optional
- Wired controller as standard offer, wireless controller optional



Specification

Model Name			YVFVXH028WAR--GX	YVFVXH036WAR--GX	YVFVXH045WAR--GX	YVFVXH056WAR--GX
Power Supply		Ph-V-Hz	1Ph/220~230V/50~60Hz	1Ph/220~230V/50~60Hz	1Ph/220~230V/50~60Hz	1Ph/220~230V/50~60Hz
Nominal Capacity						
Cooling	Capacity	kW	2.8	3.6	4.5	5.6
	Input	W	100	100	100	100
	Current	A	0.30	0.30	0.30	0.30
Heating	Capacity	kW	3.2	4.0	5.0	6.3
	Input	W	100	100	100	100
	Current	A	0.30	0.30	0.30	0.30
Motor						
Input		W	94	94	94	94
Capacitor		μ F	2 μ F/450V	2 μ F/450V	2 μ F/450V	2 μ F/450V
Speed (H/M/L)		rpm	1110/1005/745	1110/1005/745	1110/1005/745	1110/1005/745
Performance						
Indoor Noise Level (H/M/L)		dB(A)	48/46/44	48/46/44	48/46/44	48/46/44
External Static Pressure		Pa	/	/	/	/
Indoor Air Flow(H)		m3/h / CFM	800/470	800/470	800/470	800/470
Piping Size Liquid/Gas		mm	ø6.35/ø9.52	ø6.35/ø12.7	ø6.35/ø12.7	ø6.35/ø12.7
Containerization						
Indoor unit	Dimension (WxHxD)	mm	990x655x199	990x655x199	990x655x199	990x655x199
	Packing (WxHxD)	mm	1160x743x290	1160x743x290	1160x743x290	1160x743x290
	Net/Gross weight	kg	28.3/34.3	28.3/36.4	28.3/36.4	28.3/36.4
Qty per 20' /40' /40' HQ		Pieces	120/240/270	120/240/270	120/240/270	120/240/270

Rating Conditions(AHRI1230):

	Outdoor Temperature	Indoor Temperature
Cooling:	35°DB/23.9°WB	26.7°DB/19.4°WB
Heating:	8.3°DB/6.1°WB	21.1°DB /15.6°WB

FLOOR CEILING



50/60 Hz
50Hz and 60Hz, 220-230V power supply supports regions with unstable voltage, avoids power supply demand, and saves inventory and transport costs.



4 Fan Settings
Smaller dimensions for easy installation and transportation, and reduces cost.



Washable Filter
Washable filter allows for convenient service and maintenance.



ESF Filter
Electrostatic filter with an active carbon layer traps harmful dust and removes unpleasant odors, improving air quality and creating a fresh, comfortable environment. (Optional)

Specification

Model Name		YVFXH071WAR--GX	YVFXH080WAR--GX	YVFXH090WAR--GX	YVFXH112WAR--GX	YVFXH140WAR--GX	
Power Supply	Ph-V-Hz	1Ph/220~230V/50-60Hz	1Ph/220~230V/50-60Hz	1Ph/220~230V/50-60Hz	1Ph/220~230V/50-60Hz	1Ph/220~230V/50-60Hz	
Nominal Capacity							
Cooling	Capacity	kW	7.1	8.0	9.0	11.2	14.0
	Input	W	100	200	200	400	400
	Current	A	0.30	1.00	1.00	1.80	1.80
Heating	Capacity	kW	8.0	9.0	10.0	12.5	16.0
	Input	W	100	200	200	400	400
	Current	A	0.30	1.00	1.00	1.80	1.80
Motor							
Input	W	94	188	188	263	263	
Capacitor	μ F	2 μ F/450V	5 μ F/450V	5 μ F/450V	5 μ F/450V	5 μ F/450V	
Speed (H/M/L)	rpm	1110/1005/745	1120/1040/900/820	1120/1040/900/820	1395/1245/1090/980	1395/1245/1090/980	
Performance							
Indoor Noise Level (H/M/L)	dB(A)	48/46/44	49/47/45	49/47/45	50/48/46	53/51/49	
External Static Pressure	Pa	/	/	/	/	/	
Indoor Air Flow(H)	m3/h / CFM	800/470	1400/823	1400/823	2040/1200	2040/1200	
Piping Size	Liquid/Gas	mm	ø9.52/ø15.88	ø9.52/ø15.88	ø9.52/ø15.88	ø9.52/ø15.88	
Containerization							
Indoor unit	Dimension (WxHxD)	mm	990x655x199	1580x700x240	1580x700x240	1580x700x240	1580x700x240
	Packing (WxHxD)	mm	1160x743x290	1713x793x335	1713x793x335	1713x793x335	1713x793x335
	Net/Gross weight	kg	28.3/36.4	37/47	37/47	54/61	54/61
Qty per 20' /40' /40' HQ	Pieces		120/240/270	74/150/180	74/150/180	60/120/140	60/120/140

Rating Conditions(AHRI1230):

	Outdoor Temperature	Indoor Temperature
Cooling:	35°DB/23.9°WB	26.7°DB/19.4°WB
Heating:	8.3°DB/6.1°WB	21.1°DB /15.6°WB

SLIM LOW STATIC PRESSURE DUCT

Features

- Ultra thin design saving installation space
 - Only 185mm height x 500mm depth
- 0 or 30Pa selectable external static pressure
- Knock down drain pan
 - Easy disassembly
 - Two side drainage available by changing drain pan direction
- Built-in high head 750mm drain pump
- Concealed installation perfectly matching with indoor room decoration
- Multi-mode installation
 - With or without air return duct
 - Bottom or rear air return
- Wired controller as standard offer, wireless controller optional



Specification

Model Name			YV3VXH022WAR--GX	YV3VXH028WAR--GX	YV3VXH036WAR--GX
Power Supply		Ph-V-Hz	1Ph/220~230V/50~60Hz	1Ph/220~230V/50~60Hz	1Ph/220~230V/50~60Hz
Nominal Capacity					
Cooling	Capacity	kW	2.2	2.8	3.6
	Input	W	50	50	56
	Current	A	0.23	0.23	0.26
Heating	Capacity	kW	2.5	3.2	4
	Input	W	50	50	56
	Current	A	0.23	0.23	0.26
Motor					
Input		W	42	42	48
Capacitor		μF	1.2 μF	1.2 μF	3.0 μF
Speed (H/M/L)		rpm	660/580/510	660/580/510	950/800/710
Performance					
Indoor Noise Level (H/M/L)		dB(A)	27/24/21	27/24/21	30/28/25
External Static Pressure		Pa	0~30	0~30	0~30
Indoor Air Flow(H)		m3/h / CFM	480/282	480/282	550/323
Piping Size	Liquid/Gas	mm	ø6.35/ø9.52	ø6.35/ø9.52	ø6.35/ø12.7
Containerization					
Indoor unit	Dimension (WxHxD)	mm	850x185x420	850x185x420	850x185x420
	Packing (WxHxD)	mm	1045x270x540	1045x270x540	1045x270x540
	Net/Gross weight	kg	16.5/21.5	16.5/21.5	17.5/22.5
Qty per 20' /40' /40' HQ		Pieces	180/370/440	180/370/440	180/370/440

Rating Conditions(AHRI1230):

	Outdoor Temperature	Indoor Temperature
Cooling:	35°DB/23.9°WB	26.7°DB/19.4°WB
Heating:	8.3°DB/6.1°WB	21.1°DB /15.6°WB

SLIM LOW STATIC PRESSURE DUCT



50/60 Hz

50Hz and 60Hz, 220-230V power supply supports regions with unstable voltage, avoids power supply demand, and saves inventory and transport costs.



4 Fan Settings

Smaller dimensions for easy installation and transportation, and reduces cost.



Washable Filter

Washable filter allows for convenient service and maintenance.

Specification

Model Name			YV3VXH045WAR--GX	YV3VXH056WAR--GX	YV3VXH071WAR--GX
Power Supply		Ph-V-Hz	1Ph/220~230V/50-60Hz	1Ph/220~230V/50-60Hz	1Ph/220~230V/50-60Hz
Nominal Capacity					
Cooling	Capacity	kW	4.5	5.6	7.1
	Input	W	65	80	117
	Current	A	0.3	0.37	0.54
Heating	Capacity	kW	5	6.3	8
	Input	W	65	80	117
	Current	A	0.3	0.37	0.54
Motor					
Input		W	57	72	109
Capacitor		μF	3.5 μF	3.5 μF	4.0 μF
Speed (H/M/L)		rpm	1220/1060/950	1030/880/780	1210/1065/955
Performance					
Indoor Noise Level (H/M/L)		dB(A)	33/30/27	33/30/28	36/33/31
External Static Pressure		Pa	0~30	0~30	0~30
Indoor Air Flow(H)		m3/h / CFM	640/376	800/470	930/547
Piping Size	Liquid/Gas	mm	ø6.35/ø12.7	ø6.35/ø12.7	ø9.52/ø15.88
Containerization					
Indoor unit	Dimension (WxHxD)	mm	850x185x420	1170x185x420	1170x185x420
	Packing (WxHxD)	mm	1045x270x540	1365x270x540	1365x270x540
	Net/Gross weight	kg	18.5/23.5	22.2/28.2	24/30
Qty per 20' /40' /40' HQ		Pieces	180/370/440	140/290/340	140/290/340

Rating Conditions(AHRI1230):

	Outdoor Temperature	Indoor Temperature
Cooling:	35°DB/23.9°WB	26.7°DB/19.4°WB
Heating:	8.3°DB/6.1°WB	21.1°DB /15.6°WB

LOW STATIC PRESSURE DUCT

Features

- Ultra thin design saving installation space
 - Only 220mm height x 500mm depth-
- 0 or 20Pa selectable external static pressure
- Knock down drain pan
 - Easy disassembly
 - Two side drainage available by changing drain pan direction
- Without built-in drain pump, optional external drain pump
- Concealed installation perfectly matching with indoor room decoration
- Multi-mode installation
 - With or without air return duct
 - Bottom or rear air return
- Wired controller as standard offer, wireless controller optional



Specification

Model Name			YVDVXH022WAR--GX	YVDVXH028WAR--GX	YVDVXH036WAR--GX
Power Supply		Ph-V-Hz	1Ph/220~230V/50-60Hz	1Ph/220~230V/50-60Hz	1Ph/220~230V/50-60Hz
Nominal Capacity					
Cooling	Capacity	kW	2.2	2.8	3.6
	Input	W	58	58	58
	Current	A	0.27	0.27	0.27
Heating	Capacity	kW	2.5	3.2	4
	Input	W	58	58	58
	Current	A	0.27	0.27	0.27
Motor					
Input		W	57	57	57
Capacitor		μ F	1.5 μ F/450V	1.5 μ F/450V	1.5 μ F/450V
Speed (H/M/L)		rpm	1050/950/850/750	1050/950/850/750	1050/950/850/750
Performance					
Indoor Noise Level (H/M/L)		dB(A)	35/32/30	35/32/30	35/32/30
External Static Pressure		Pa	0~20	0~20	0~20
Indoor Air Flow(H)		m3/h / CFM	400/235	400/235	500/294
Piping Size	Liquid/Gas	mm	ø6.35/ø9.52	ø6.35/ø9.52	ø6.35/ø12.7
Containerization					
Indoor unit	Dimension (WxHxD)	mm	610x220x500	610x220x500	610x220x500
	Packing (WxHxD)	mm	708x280x549	708x280x549	708x280x549
	Net/Gross weight	kg	15/18	15/18	16/19
Qty per 20' /40' /40' HQ		Pieces	196/392/400	196/392/400	196/392/400

Rating Conditions(AHRI1230):

	Outdoor Temperature	Indoor Temperature
Cooling:	35°DB/23.9°WB	26.7°DB/19.4°WB
Heating:	8.3°DB/6.1°WB	21.1°DB /15.6°WB

LOW STATIC PRESSURE DUCT



50/60 Hz

50Hz and 60Hz, 220-230V power supply supports regions with unstable voltage, avoids power supply demand, and saves inventory and transport costs.



4 Fan Settings

Smaller dimensions for easy installation and transportation, and reduces cost.



Washable Filter

Washable filter allows for convenient service and maintenance.

Specification

Model Name			YVDVXH045WAR--GX	YVDVXH056WAR--GX	YVDVXH071WAR--GX
Power Supply		Ph-V-Hz	1Ph/220~230V/50-60Hz	1Ph/220~230V/50-60Hz	1Ph/220~230V/50-60Hz
Nominal Capacity					
Cooling	Capacity	kW	4.5	5.6	7.1
	Input	W	80	116	116
	Current	A	0.38	0.55	0.55
Heating	Capacity	kW	5	6.3	8
	Input	W	80	116	116
	Current	A	0.38	0.55	0.55
Motor					
Input		W	78.5	115	115
Capacitor		μ F	3.5 μ F/450V	5 μ F/450V	5 μ F/450V
Speed (H/M/L)		rpm	790/720/560/475	980/865/750/630	980/865/750/630
Performance					
Indoor Noise Level (H/M/L)		dB(A)	35/32/30	39/37/35	39/37/35
External Static Pressure		Pa	0~20	0~20	0~20
Indoor Air Flow(H)		m3/h / CFM	850/500	1250/735	1250/735
Piping Size	Liquid/Gas	mm	ø6.35/ø12.7	ø6.35/ø12.7	ø9.52/ø15.88
Containerization					
Indoor unit	Dimension (WxHxD)	mm	1105x220x500	1105x220x500	1105x220x500
	Packing (WxHxD)	mm	1174x280x549	1174x280x549	1174x280x549
	Net/Gross weight	kg	25/27	28/29	28/29
Qty per 20' / 40' / 40' HQ		Pieces	112/252/288	112/252/288	112/252/288

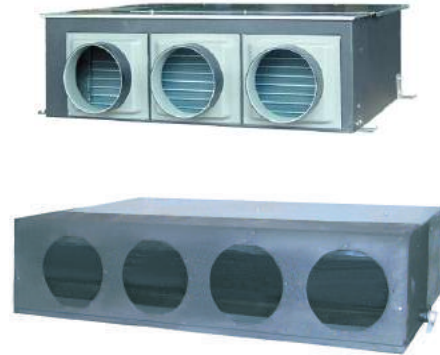
Rating Conditions(AHRI1230):

	Outdoor Temperature	Indoor Temperature
Cooling:	35°DB/23.9°WB	26.7°DB/19.4°WB
Heating:	8.3°DB/6.1°WB	21.1°DB /15.6°WB

MEDIUM STATIC PRESSURE DUCT

Features

- Standard built-in high head drain pump
 - Up to 750mm head for 5.6~8.0kW
- External drain pump optional for 9.0~14kW
- Free setting of air discharge duct
 - Free selection of air flow outlets and installation position
- Wired controller as standard offer, wireless controller optional



Specification

Model Name			YVEVXH056WAR--GX	YVEVXH071WAR--GX	YVEVXH080WAR--GX
Power Supply		Ph-V-Hz	1Ph/220~230V/50~60Hz	1Ph/220~230V/50~60Hz	1Ph/220~230V/50~60Hz
Nominal Capacity					
Cooling	Capacity	kW	5.6	7.1	8
	Input	W	235	235	235
	Current	A	1.1	1.1	1.1
Heating	Capacity	kW	7.1	8	9
	Input	W	235	235	235
	Current	A	1.1	1.1	1.1
Motor					
Input		W	225	225	225
Capacitor		μ F	8 μ F/450V	8 μ F/450V	8 μ F/450V
Speed (H/M/L)		rpm	1000/940/880/840	1000/940/880/840	1000/940/880/840
Performance					
Indoor Noise Level (H/M/L)		dB(A)	43/37/35	43/37/35	43/37/35
External Static Pressure		Pa	50~96	50~96	50~96
Indoor Air Flow(H)		m3/h / CFM	1200/706	1200/706	1200/706
Piping Size	Liquid/Gas	mm	ø6.35/ø12.7	ø9.52/ø15.88	ø9.52/ø15.88
Containerization					
Indoor unit	Dimension (WxHxD)	mm	990x300x655	990x300x655	990x300x655
	Packing (WxHxD)	mm	1165x340x733	1165x340x733	1165x340x733
	Net/Gross weight	kg	39/45	39/45	39/45
Qty per 20' /40' /40' HQ		Pieces	60/130/156	60/130/156	60/130/156

Rating Conditions(AHRI1230):

	Outdoor Temperature	Indoor Temperature
Cooling:	35°DB/23.9°WB	26.7°DB/19.4°WB
Heating:	8.3°DB/6.1°WB	21.1°DB /15.6°WB

MEDIUM STATIC PRESSURE DUCT



50/60 Hz
50Hz and 60Hz, 220-230V power supply supports regions with unstable voltage, avoids power supply demand, and saves inventory and transport costs.



4 Fan Settings
Smaller dimensions for easy installation and transportation, and reduces cost.



Washable Filter
Washable filter allows for convenient service and maintenance.

Specification (Optional)

Model Name			YVEVXH090WAR--GX	YVEVXH112WAR--GX	YVEVXH140WAR--GX
Power Supply		Ph-V-Hz	1Ph/220~230V/50-60Hz	1Ph/220~230V/50-60Hz	1Ph/220~230V/50-60Hz
Nominal Capacity					
Cooling	Capacity	kW	9	11.2	14
	Input	W	490	490	490
	Current	A	2.2	2.2	2.2
Heating	Capacity	kW	10	12.5	16
	Input	W	490	490	490
	Current	A	2.2	2.2	2.2
Motor					
Input	W		478	478	478
Capacitor	μ F		12.5 μ F/450V	12.5 μ F/450V	12.5 μ F/450V
Speed (H/M/L)	rpm		1340/1260/1190/1110	1340/1260/1190/1110	1340/1260/1190/1110
Performance					
Indoor Noise Level (H/M/L)	dB(A)		43/37/35	43/37/35	44/40/36
External Static Pressure	Pa		80-120	80-120	80-120
Indoor Air Flow(H)	m3/h / CFM		1600/941	1600/941	1600/941
Piping Size	Liquid/Gas	mm	ø9.52/ø15.88	ø9.52/ø15.88	ø9.52/ø15.88
Containerization					
Indoor unit	Dimension (WxHxD)	mm	1135x270x742	1135x270x742	1135x270x742
	Packing (WxHxD)	mm	1355x375x855	1355x375x855	1355x375x855
	Net/Gross weight	kg	50/53	50/53	50/53
Qty per 20' /40' /40' HQ	Pieces		60/132/154	60/132/154	60/132/154

Rating Conditions(AHRI1230):

	Outdoor Temperature	Indoor Temperature
Cooling:	35°DB/23.9°WB	26.7°DB/19.4°WB
Heating:	8.3°DB/6.1°WB	21.1°DB /15.6°WB

HIGH STATIC PRESSURE DUCT

Features

- High external static pressure design
 - Max. external static pressure of 196Pa
 - 100 or 196Pa selectable static pressure
- Without built-in drain pump, optional external drain pump
- Free setting of air discharge duct
 - Free selection of air flow outlets and installation position
- Wired controller as standard offer, wireless controller optional



Specification

Model Name			YVGX056WAR--GX	YVGX071WAR--GX	YVGX080WAR--GX	YVGX090WAR--GX
Power Supply		Ph-V-Hz	1Ph/220~230V/50-60Hz	1Ph/220~230V/50-60Hz	1Ph/220~230V/50-60Hz	1Ph/220~230V/50-60Hz
Nominal Capacity						
Cooling	Capacity	kW	5.6	7.1	8.0	9.0
	Input	W	450	450	450	560
	Current	A	2.05	2.05	2.05	2.55
Heating	Capacity	kW	6.3	8.0	9.0	10.0
	Input	W	450	450	450	560
	Current	A	2.05	2.05	2.05	2.55
Motor						
Input	W		440	440	440	550
Capacitor	μ F		12.5 μ F/450V	12.5 μ F/450V	12.5 μ F/450V	12.5 μ F/450V
Speed (H/M/L)	rpm		1400/1350/1290	1400/1350/1290	1400/1350/1290	1070/950/860/690
Performance						
Indoor Noise Level (H/M/L)	dB(A)		42/40	42/40	42/40	45/40
External Static Pressure	Pa		50~196	50~196	50~196	50~196
Indoor Air Flow(H)	m3/h / CFM		1600/941	1500/882	1500/882	2100/1235
Piping Size	Liquid/Gas	mm	ø6.35/ø12.7	ø9.52/ø15.88	ø9.52/ø15.88	ø9.52/ø15.88
Containerization						
Indoor unit	Dimension (WxHxD)	mm	970x360x875	970x360x875	970x360x875	1350x360x906
	Packing (WxHxD)	mm	1048x413x943	1048x413x943	1048x413x943	1378x405x938
	Net/Gross weight	kg	56/61	56/61	56/61	62/77
Qty per 20' /40' /40' HQ	Pieces		60/120/144	60/120/144	60/120/144	40/80/96

Rating Conditions(AHRI1230):

	Outdoor Temperature	Indoor Temperature
Cooling:	35°DB/23.9°WB	26.7°DB/19.4°WB
Heating:	8.3°DB/6.1°WB	21.1°DB /15.6°WB

HIGH STATIC PRESSURE DUCT



50/60 Hz
50Hz and 60Hz, 220-230V power supply supports regions with unstable voltage, avoids power supply demand, and saves inventory and transport costs.



4 Fan Settings
Smaller dimensions for easy installation and transportation, and reduces cost.



Washable Filter
Washable filter allows for convenient service and maintenance.

Specification

Model Name			YVGVXH112WAR--GX	YVGVXH140WAR--GX	YVGVXH226WAR--GX	YVGVXH280WAR--GX
Power Supply		Ph-V-Hz	1Ph/220~230V/50-60Hz	1Ph/220~230V/50-60Hz	1Ph/220~230V/50-60Hz	1Ph/220~230V/50-60Hz
Nominal Capacity						
Cooling	Capacity	kW	11.2	14.0	22.6	28.0
	Input	W	560	560	1110	1110
	Current	A	2.55	2.55	5.05	5.05
Heating	Capacity	kW	12.5	16.0	25.0	31.6
	Input	W	560	560	1110	1110
	Current	A	2.55	2.55	5.05	5.05
Motor						
Input		W	550	550	550*2	550*2
Capacitor		μ F	12.5 μ F/450V	12.5 μ F/450V	12.5 μ F/450V	12.5 μ F/450V
Speed (H/M/L)		rpm	1070/950/860/690	1070/950/860/690	1070/860/690	1070/860/690
Performance						
Indoor Noise Level (H/M/L)		dB(A)	45/40	45/40	54/49	54/49
External Static Pressure		Pa	50~196	50~196	50~196	50~196
Indoor Air Flow(H)		m3/h / CFM	2100/1235	2100/1235	4050/2381	4050/2381
Piping Size	Liquid/Gas	mm	ø9.52/ø15.88	ø9.52/ø15.88	ø9.52/ø25.4	ø9.52/ø25.4
Containerization						
Indoor unit	Dimension (WxHxD)	mm	1350x360x906	1350x360x906	1720x360x880	1720x360x880
	Packing (WxHxD)	mm	1378x405x938	1378x405x938	1830x525x990	1830x525x990
	Net/Gross weight	kg	62/77	62/77	92/134	92/134
Qty per 20' /40' /40' HQ		Pieces	40/80/96	40/80/96	20/40/42	20/40/42

Rating Conditions(AHRI1230):

	Outdoor Temperature	Indoor Temperature
Cooling:	35°DB/23.9°WB	26.7°DB/19.4°WB
Heating:	8.3°DB/6.1°WB	21.1°DB /15.6°WB

FRESH AIR UNIT

Features

- Install with other indoor units together
 - Installed capacity must less than 30% of outdoor capacity
- Wired controller as standard offer, wireless controller not optional
- 100Pa static pressure
- Operation ambient temperature -5~43° C



Specification

Model Name			YV4VXH140WAR--GX	YV4VXH226WAR--GX	YV4VXH280WAR--GX
Power Supply		Ph-V-Hz	1Ph/220~230V/50-60Hz	1Ph/220~230V/50-60Hz	1Ph/220~230V/50-60Hz
Nominal Capacity					
Cooling	Capacity	kW	14	22.6	28
	Input	W	560	1040	1040
	Current	A	2.5	4.7	4.7
Heating	Capacity	kW	8.9	15.2	17.8
	Input	W	560	1040	1040
	Current	A	2.5	4.7	4.7
Motor					
Input	W		550	515*2	515*2
Capacitor	μ F		1.2 μ F/450V	1.2 μ F/450V	1.2 μ F/450V
Speed (H/M/L)	rpm		1070	1300	1300
Performance					
Indoor Noise Level (H/M/L)	dB(A)		48	55	55
External Static Pressure	Pa		100	100	100
Indoor Air Flow(H)	m3/h / CFM		1600/941	2800/1646	2800/1646
Piping Size	Liquid/Gas	mm	ø9.52/ø15.88	ø9.52/ø25.4	ø9.52/ø25.4
Containerization					
Indoor unit	Dimension (WxHxD)	mm	1350x360x875	1610x360x840	1610x360x840
	Packing (WxHxD)	mm	1378x405x938	1830x525x990	1830x525x990
	Net/Gross weight	kg	62/77	92/100	92/100
Qty per 20' /40' /40' HQ	Pieces		40/80/96	20/40/42	20/40/42

Rating Conditions(AHRI1230):

	Outdoor Temperature	Indoor Temperature
Cooling:	35°DB/23.9°WB	26.7°DB/19.4°WB
Heating:	8.3°DB/6.1°WB	21.1°DB /15.6°WB

HEAT RECOVERY VENTILATOR

Features

- Efficient heat recovery air processing
 - Exchange the heat between supplied air and exhausted air, equalizing the outdoor air to indoor temperature
 - Decrease the interior heat load to save energy
- Replaceable heat exchange media



Specification

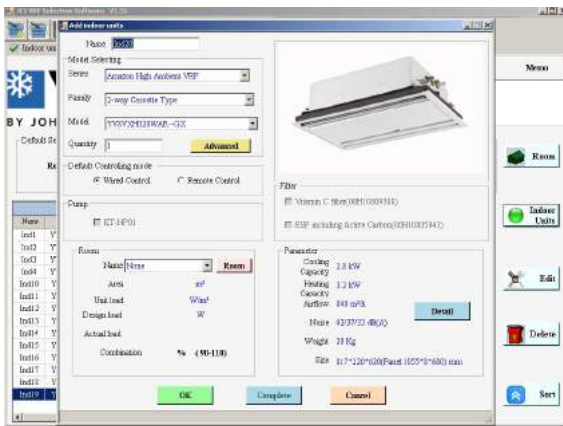
Model Name		YV6VXH015CAR--GX	YV6VXH026CAR--GX	YV6VXH080CAR--GX	YV6VXH100CAR--GX
Power Supply	Ph-V-Hz	1Ph/220~230V/50-60Hz	1Ph/220~230V/50-60Hz	1Ph/220~230V/50-60Hz	1Ph/220~230V/50-60Hz
Nominal Capacity					
Cooling	Capacity	kW	/	/	/
	Input	W	/	/	/
	Current	A	/	/	/
Heating	Capacity	kW	/	/	/
	Input	W	/	/	/
	Current	A	/	/	/
Motor					
Input	W	65	65	270	270
Capacitor	μ F	2.5	2.5	5	5
Speed (H/M/L)	rpm	1040/970/660	1040/970/660	1240/1180/1100	1240/1180/1100
Performance					
Indoor Noise Level (H/M/L)	dB(A)	42/40/32	44/42/34	55/53/50	57/55/52
External Static Pressure	Pa	50	60	80	100
Indoor Air Flow(H)	m3/h / CFM	150/88	200/118	800/470	1000/588
Piping Size	Liquid/Gas	mm	/	/	/
Containerization					
Indoor unit	Dimension (WxHxD)	mm	940x276x685	940x276x685	1227x387x1115
	Packing (WxHxD)	mm	1000x320x760	1000x320x760	1452x410x1200
	Net/Gross weight	kg	28.7/31.2	28.7/31.2	85.5/90.6
Qty per 20' /40' /40' HQ	Pieces	119/252/288	119/252/288	20/50/60	20/50/60

SELECTION SOFTWARE

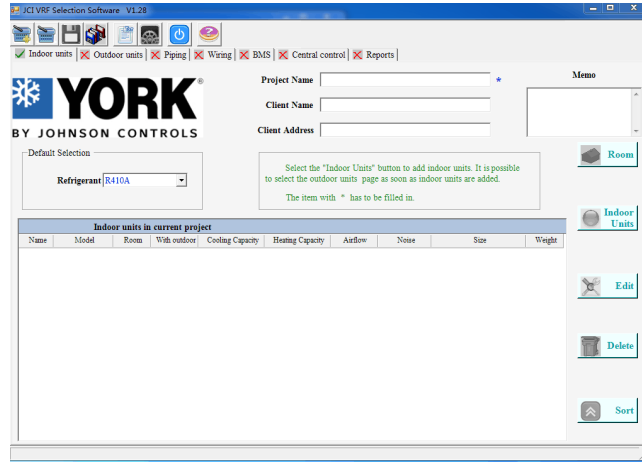
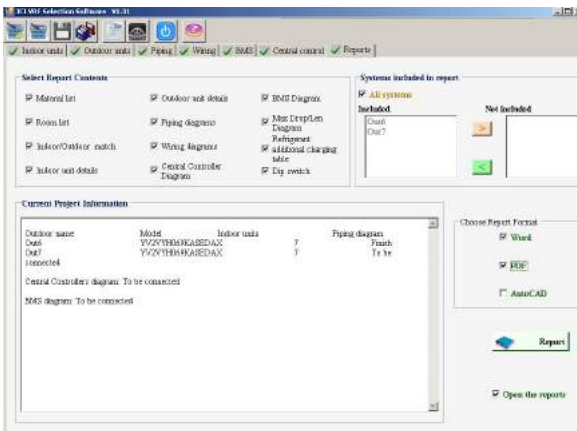
Function

- Select Outdoors and Indoors based on the required capacity as well as according to project specifications
- Provides System Ratings considering Outdoor design conditions

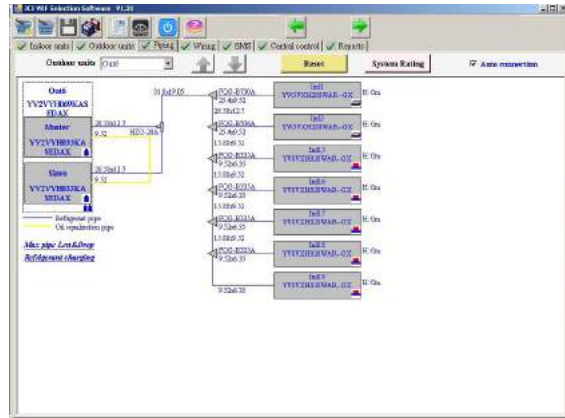
Indoor Selection



Final Report



Piping



Outputs List

- Material List (Including Indoor And Outdoor Units, Total Pipe And Wire Length, Total Accessories)
- Room List
- Indoor/Outdoor Matching Table
- Indoor Units And Outdoor Units Details
- Piping And Wiring Diagrams
- Pipe Length & Drop Limitation
- Refrigerant Charging Guide
- Prices for each of the components

For more information about VRF Air Conditioning System,
please contact your local Johnson Controls representative.

About Johnson Controls

Johnson Controls is a leading provider of equipment, controls and services for heating, ventilating, air-conditioning, refrigeration and security systems for buildings. Operating from 500 branch offices in 150 countries, we create building environments that help people achieve more by delivering products, services and solutions that increase energy efficiency and lower operating costs. We are involved in more than 500 renewable energy projects including solar, wind and geothermal technologies. Our solutions have reduced carbon dioxide emissions by 13.6 million metric tons and generated savings of \$7.5 billion since 2000. Many of the world's largest companies rely on us to manage 1.5 billion square feet of their commercial real estate.

